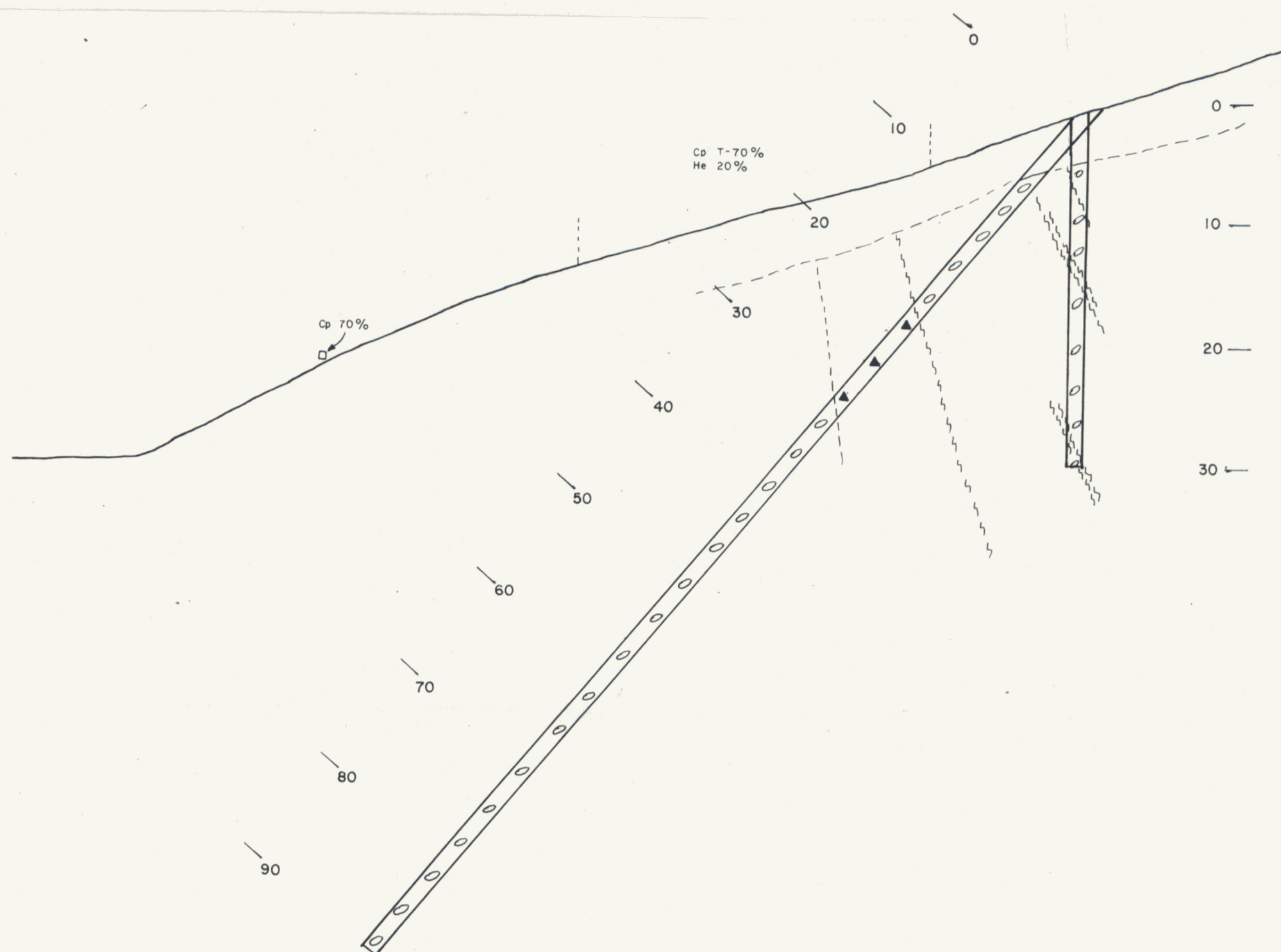
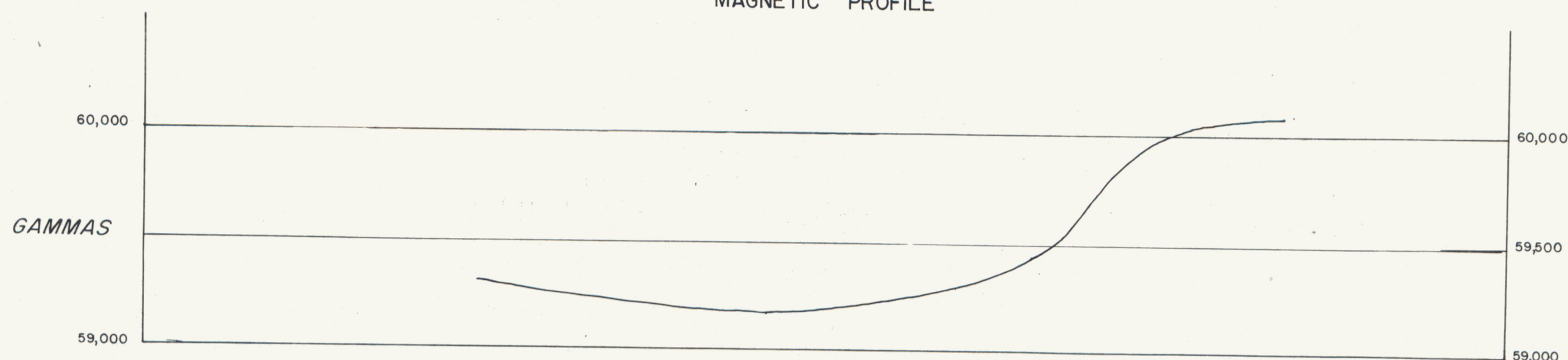
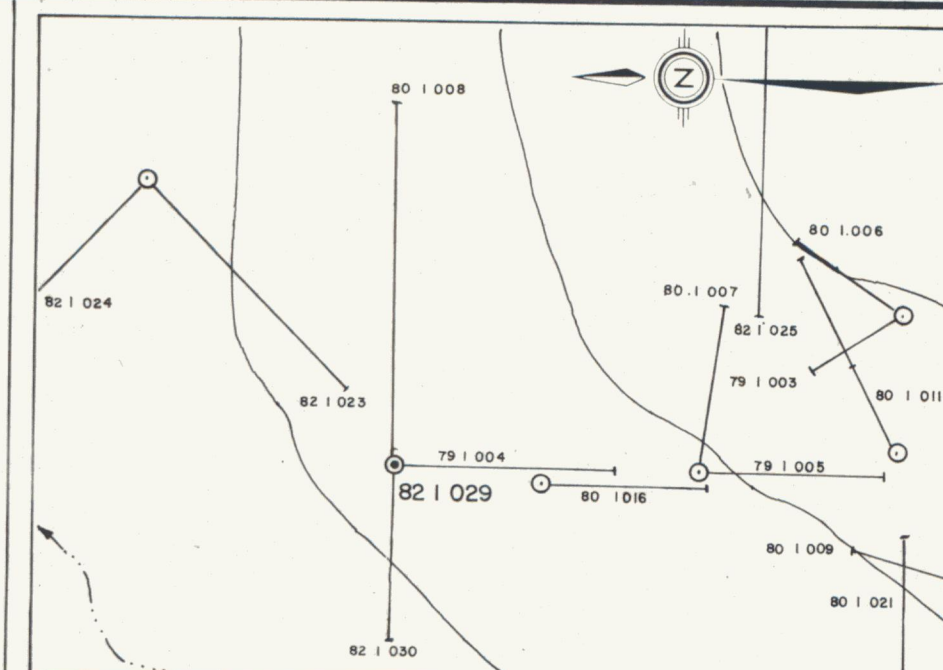


MAGNETIC PROFILE



HOLE 821029
 COORDINATES 37+66N, 0+46E
 COLLAR ELEVATION 1108m
 AZIMUTH DIP -90
 DEPTH 30.2m (99.1')

SECTION FACING NORTH



LOCATION MAP SCALE 1:2500

50 25 0 50 100
 METRES

LEGEND

- Chloritic breccia (Hb 4) - dark green chloritic matrix & fragments, often hematitic, associated with Hb 3 fault zones.
- Clast deficient breccia (Hb 3) - euhedral to subhedral magnetite, often hematized, associated with pyrite, chalcopyrite, barite and carbonate.
- Heteroclast breccia (Hb 2) - with chlorite, albite, hematite, carbonate alteration of rock fragments and matrix.
- Homoclast breccia (Hb 1) - strongly foliated and bleached fragments of Q2s in a carbonate matrix.
- Quarter Group (Q2) - siltstones and phyllites.
- Fault.
- Gossan.
- Mineral occurrence.
- Single rock location with % of various minerals.
- Trace.
- Chalcopyrite.
- Pyrite.
- Magnetite.
- Hematite.
- Malachite.
- Azurite.
- Barite.
- Siderite.

Figure WJV82 - 18

ARCHER, CATHRO & ASSOCIATES (1981) LIMITED

SECTION HOLE 821029

IGOR PROPERTY

WERNECKE JOINT VENTURE

W. P. 20/03

SCALE 1:400
 10 8 6 4 2 0 4 8 12 16 20
 metres.

To accompany report dated December, 1982.

091445